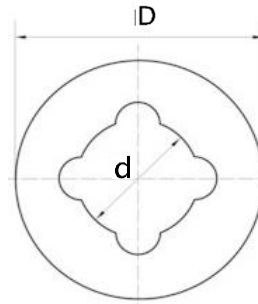


Flat Anti-Loss Washers



Flat Anti-Loss Washers							
Size	M5		M6	M8	M10	M12	M16
d	4.3		5.1	6.2	8.4	9.8	13.5
D	10	12	12	14	20	20	28
h	0.5 - *0.8- 1.0		0.5 - *0.8 - 1.0	0.5 - * 0.8 - 1.0	0.5-*0.8 - 1.0	0.5 - *0.8 - 1.0	0.5 - *0.8 - 1.0

0.8mm Thickness Are Subject To Minimum Manufacturing Quantities

Material: Natural Nylon

INFORMATION AND DRAWINGS PROVIDED ARE FOR REFERENCE ONLY